

# Annual Report 2025





# In our ProtoTech Solutions...

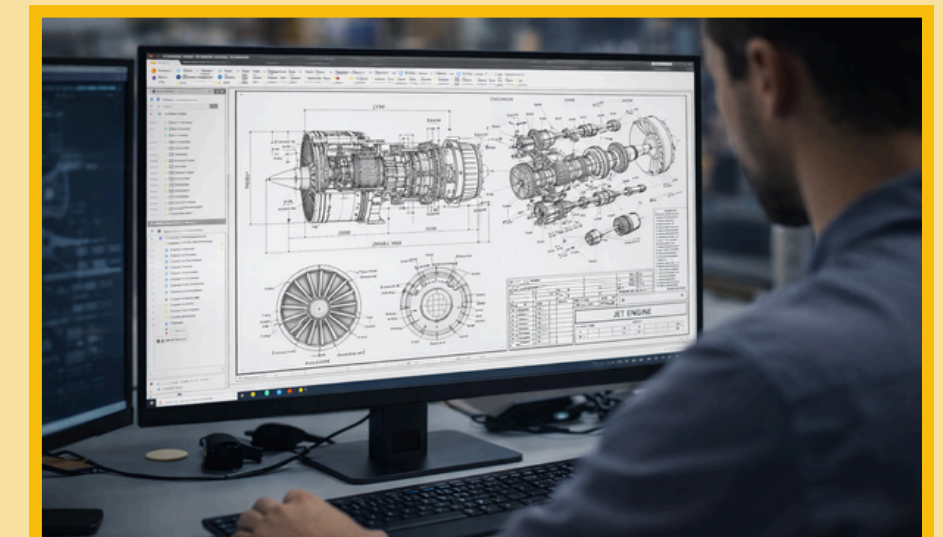
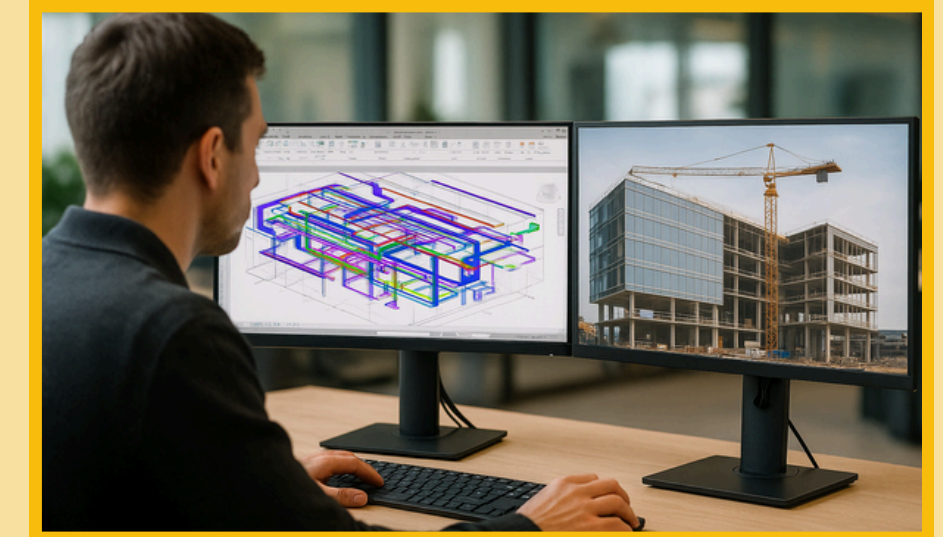
As we enter the new year 2026, we look back with pride at a year filled with meaningful collaborations, technology milestones, and continuous growth.

In 2025, our hardworking team successfully implemented new strategies and projects, increasing both revenue and market share.

# New Services...

As part of our growth strategy, we are actively expanding our expertise across advanced design and modeling technologies to meet evolving industry needs.

- **AI & Automation**
- **CAD Design & Drafting**
- **BIM Modeling**
- **Architectural Engineering**
- **Civil Engineering**
- **Mechanical Engineering**





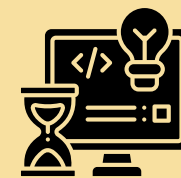
# Portfolio

## Highlights... Since 2005

Our portfolio has grown steadily with the addition of exciting new projects and strategic partnerships.



3000+ Happy Clients



300+ Projects Delivered



100+ Countries Served

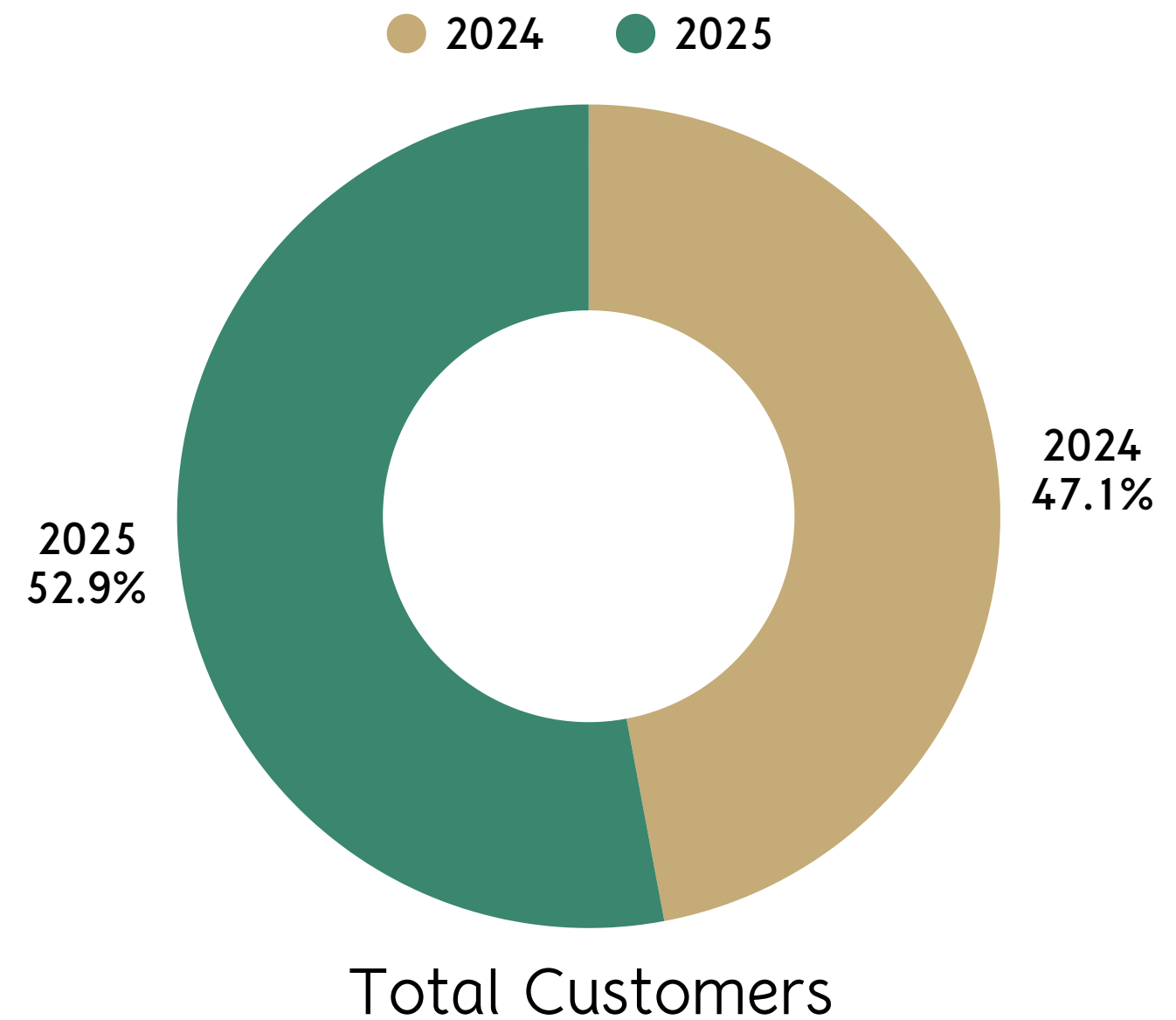
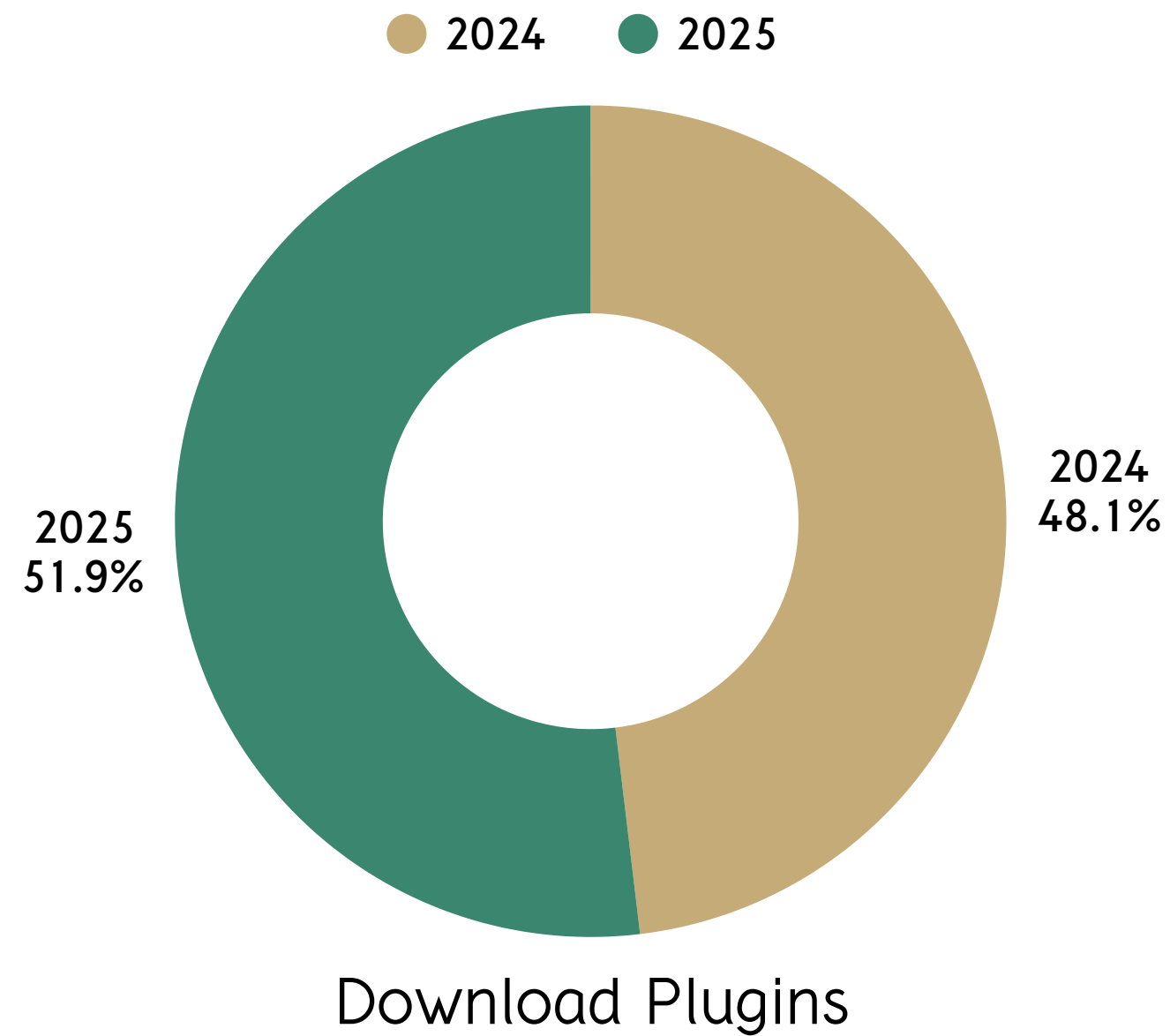


# Milestone Achievements...

We have earned another milestone in APS Manufacturing Automation and Data Models.

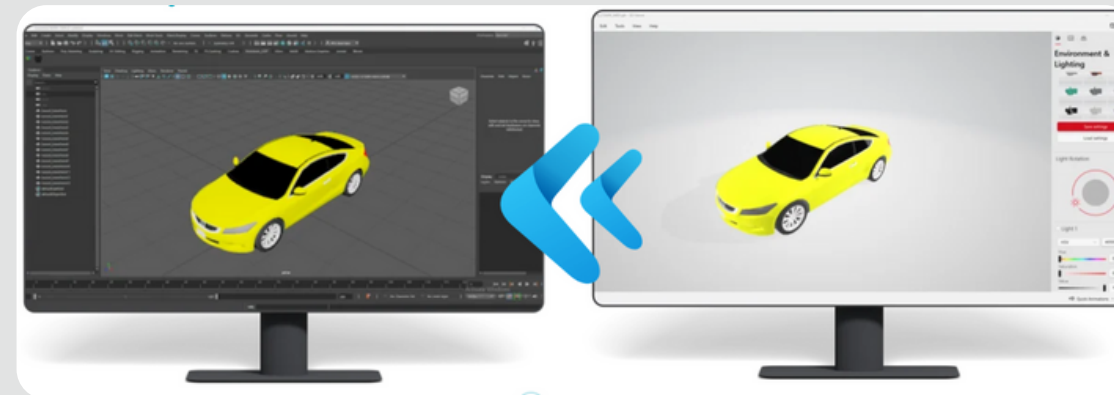


# Our CAD Plugins Highlights...



# Technology Achievements...

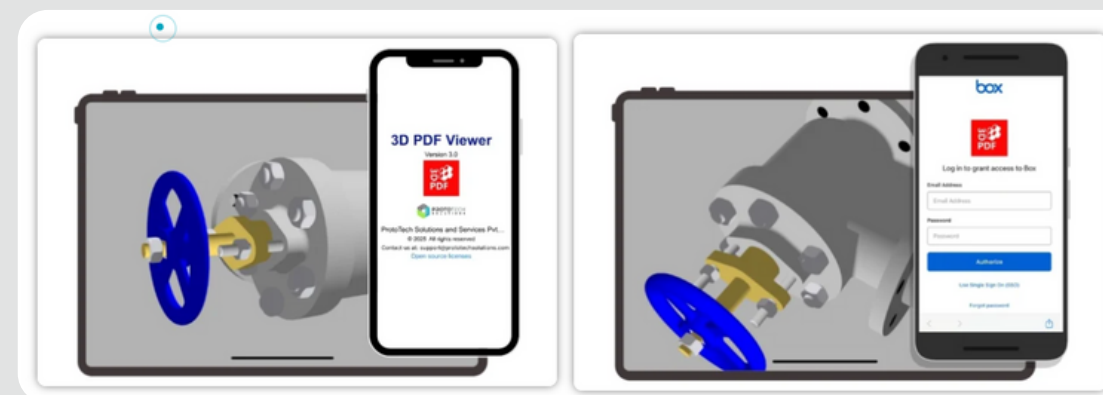
We developed new CAD plugins and upgraded our 3D PDF Viewer app for Android and iOS to better serve our customers.



GLTF Importer for Maya



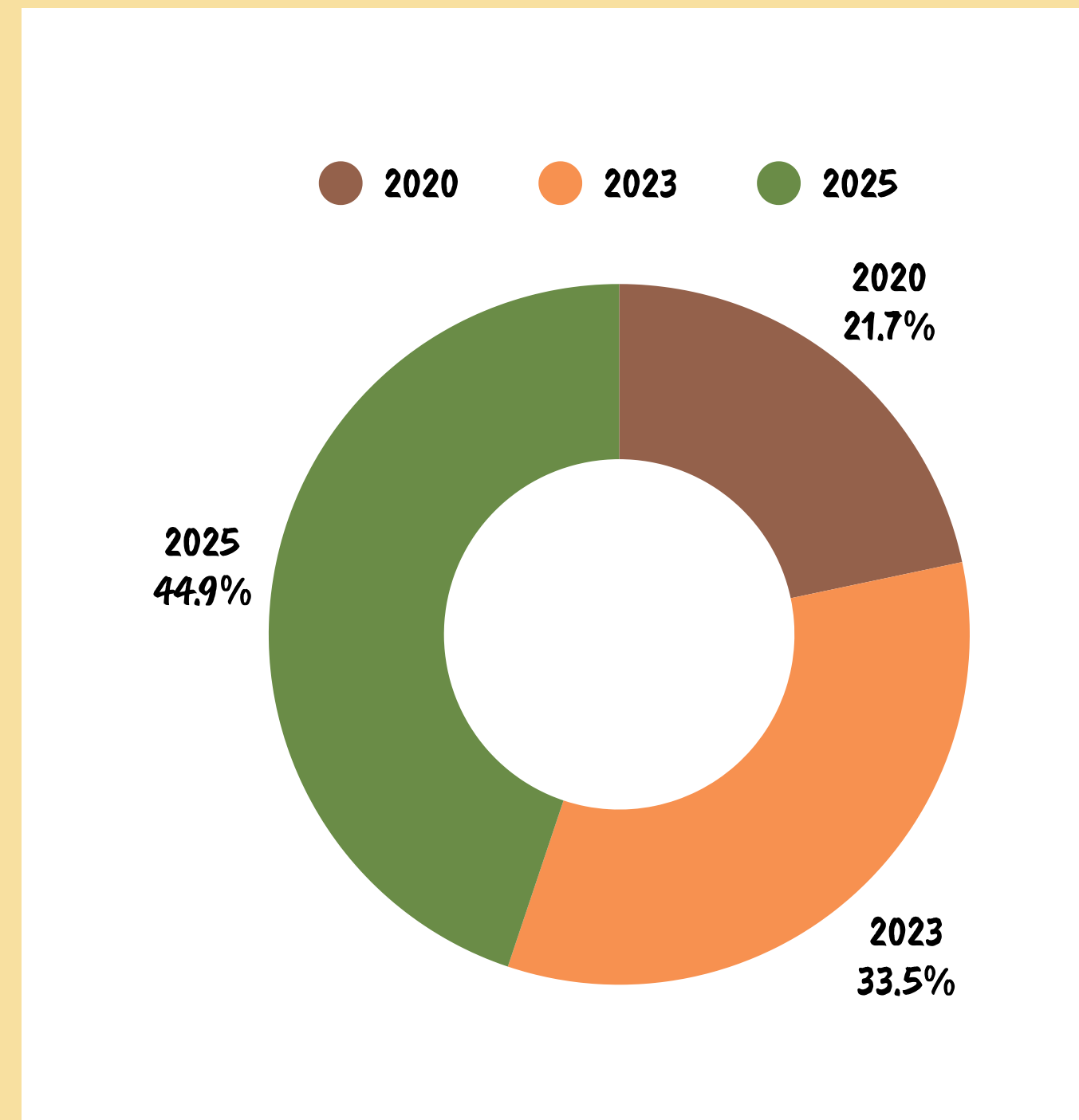
GLTF Exporter for AutoCAD



3D PDF Viewer App

# Employee Growth Highlights...

Our company has grown and will keep growing





# Participation in Conferences...



Autodesk Partner Leadership Summit, APAC!

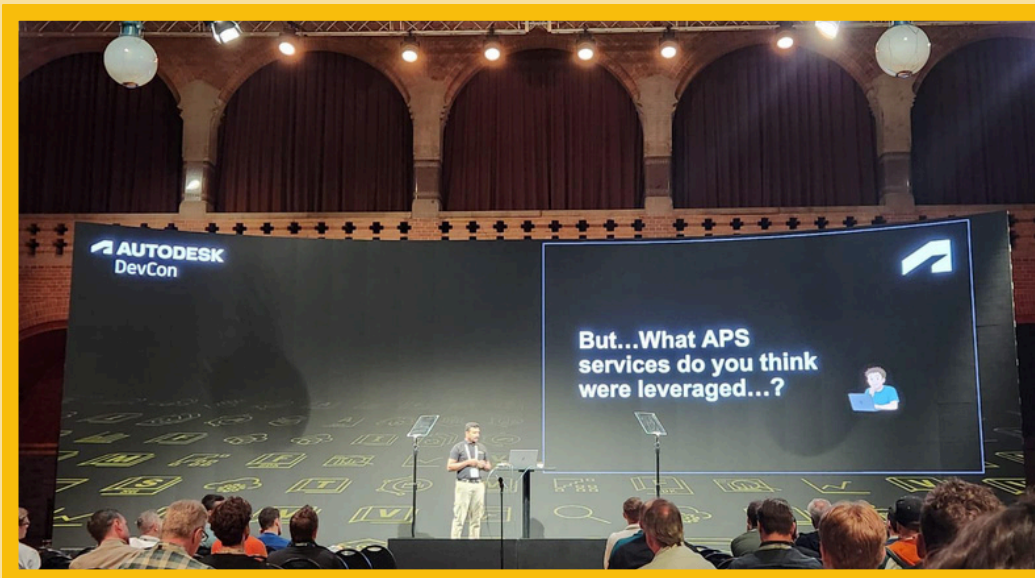


Autodesk DevCon Europe 2025



# Speaker AT DevCon Europe 2025...

ProtoTech had the honor of being a featured speaker, presenting a groundbreaking session titled “Utilizing APS to Assess the Environmental Impact of Inventor Models” ([Link](#))





# Client Engagements & Visits...

Our global clients visit our office to explore how our technology benefits their business and leave with valuable insights.





# Our Top Clients...

Our growth in advanced technologies is driven by strong expertise and long-standing relationships with global clients who trust us to deliver accuracy, quality, and innovation.





# Client Insights...

Understanding our clients' needs remains central to everything we do. Feedback received throughout the year highlights both our strengths and areas where we continue to improve.

Client Satisfaction Rate:  
95%.

Common Feedback Themes:  
Consistently high-quality  
technical solutions and strong  
domain expertise in CAD, CAM,  
BIM, and automation.

Actions Taken: Continued  
product and plugin  
enhancements based on real  
client use cases.



## GET IN TOUCH:

You can reach us at:  
[sales@prototechsolutions.com](mailto:sales@prototechsolutions.com)

You can phone us at:  
+1 (747) 297-5160 (USA)  
+91 82638-01410 (India)



# *It's Going to be a Great Year!*

We extend our sincere gratitude  
to our clients, partners, and  
team members who made 2025  
a remarkable year.

[www.prototechsolutions.com](http://www.prototechsolutions.com)

